

A high-angle, nighttime photograph of a cityscape, likely Milan, featuring several tall skyscrapers and a large, illuminated circular plaza in the center. The sky is a deep blue with a hint of orange from the setting or rising sun. The buildings are lit up, and the plaza has a complex, geometric pattern of lights.

INSPIRED BY PROGRESS

Mobility Solutions for a Smart City

OM
NIA

We work hard in hand with customer to develop solutions that solve difficult product challenges.

SAFETY

Our products are engineered, and manufactured with respect to the highest safety standards. We make sure that every lift is certified according to the European Regulations and equipped with the latest passenger safety features.

FLEXIBILITY

We develop long-term relationships with our clients by delivering comprehensive, innovative solutions that respond directly to their specific needs while engaging with the utmost integrity, transparency and professionalism.

INNOVATION

We've spent 60 years innovating as a company. Today, we have a team of specialized engineers dedicated to solving challenging problems.

DESIGN

We built our business on improving product style. Our high quality finishes offer our customers competitive advantages and distinguishing design.

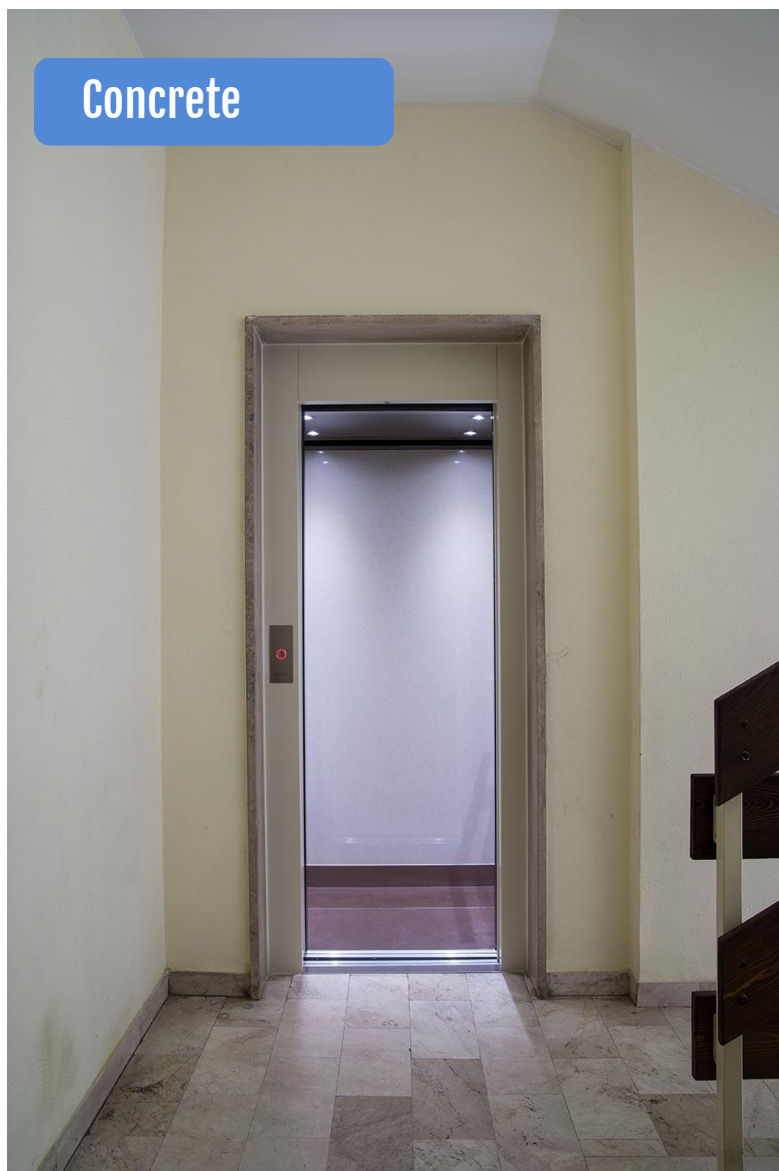
A low-angle, upward-looking photograph of several modern skyscrapers with glass facades, reaching towards a clear blue sky. The perspective creates a sense of height and architectural grandeur.

THE PRODUCT LINE :

KIKO

HYDRAULIC AND ELECTRIC PLATFORM LIFTS
Conforming to Machinery Directive and EN 81-41.
Up to 500 kg (Kiko Industry up to 4000 kg)

Concrete



KIKO

HYDRAULIC AND ELECTRIC PLATFORM LIFTS

Conforming to Machinery Directive and EN 81-41.

Up to 500 kg. (Kiko Industry up to 4000 kg)

Structure



KIKO

KIKO

KIKO
ELITE

The logo for ONE, featuring a large, bold, orange 'ONE' with a grey 'O' that has a white dot inside, similar to the Omnia Lift logo.

MRL ELECTRIC Lifts

Conforming to EN 81-20, EN 81-50, EN 81-70 and EN 81-21
Infinity of configurations.

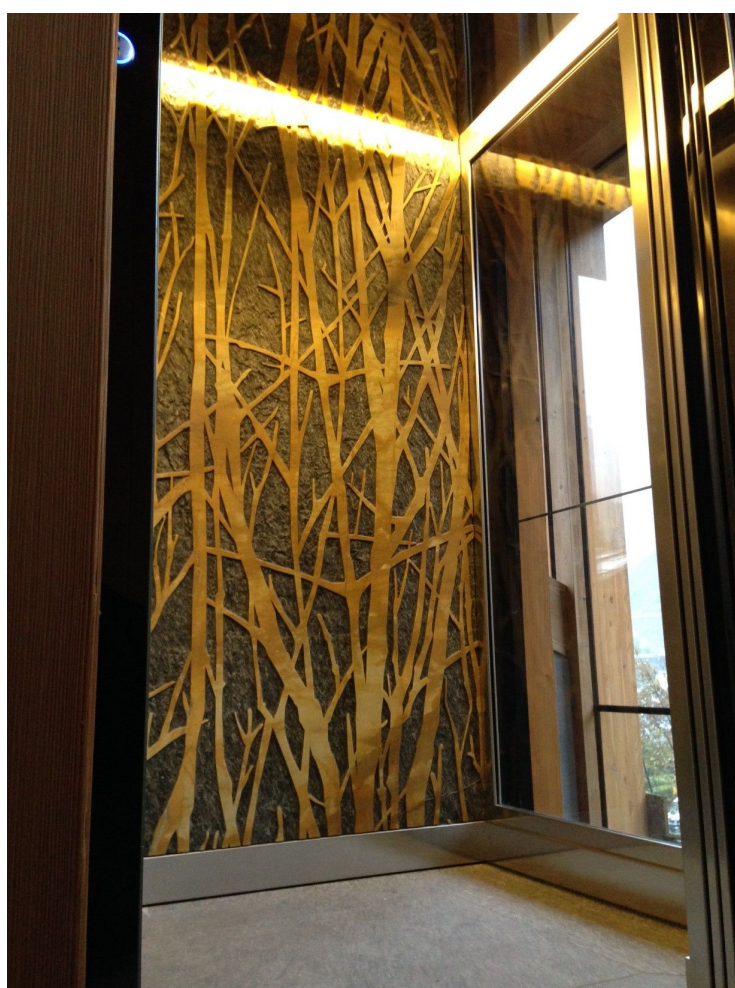
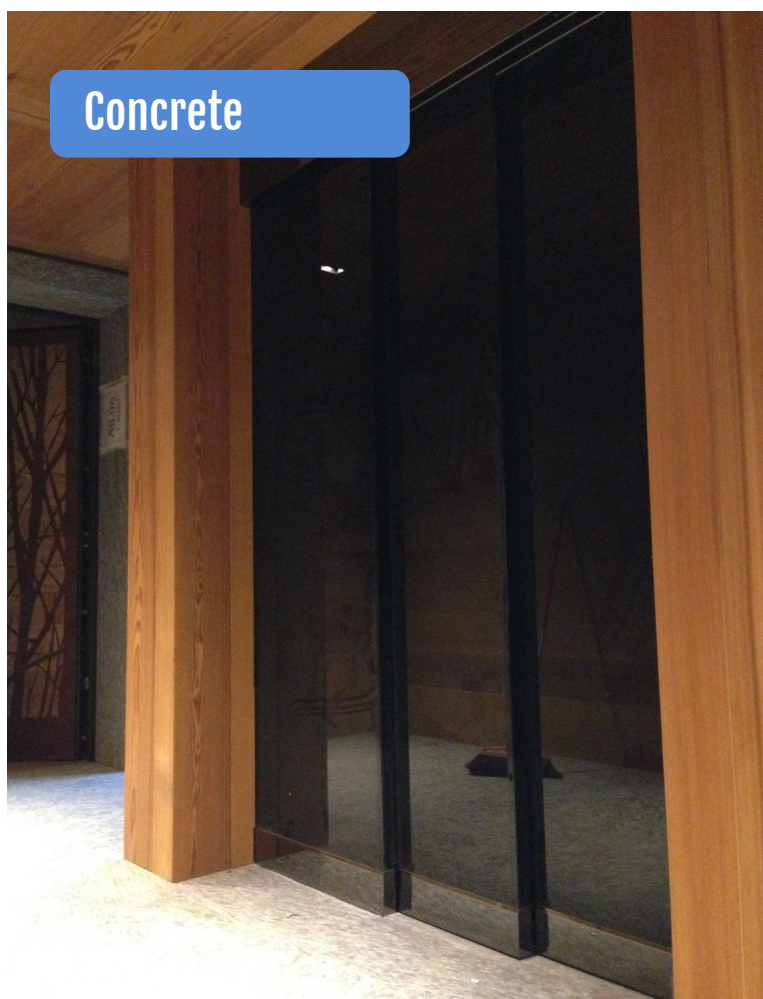


ONE

MRL ELECTRIC Lifts

Conforming to EN 81-20, EN 81-50, EN 81-70 and EN 81-21
Infinity of configurations.

Concrete



ONE
BASIC

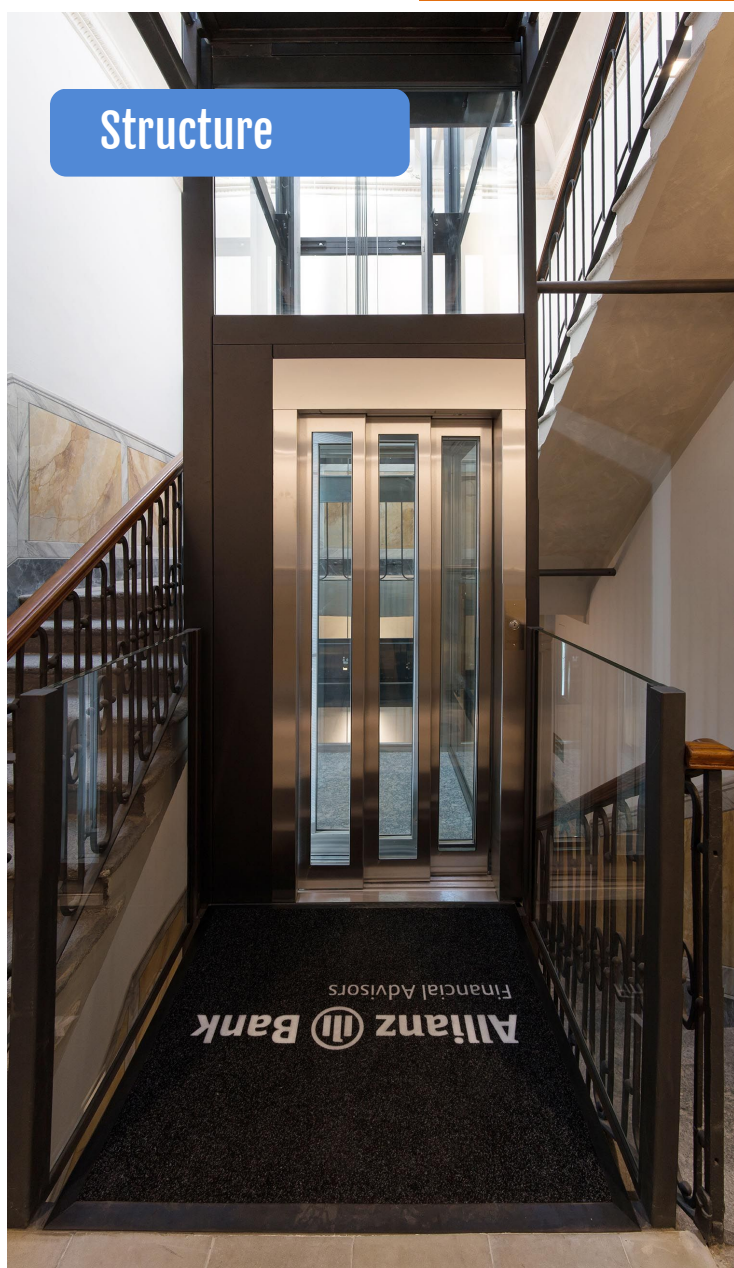
ONE
+

ONE

MRL ELECTRIC Lifts

Conforming to EN 81-20, EN 81-50, EN 81-70 and EN 81-21
Infinity of configurations.

Structure



ONE **ONE** **ONE**
+ SLIM BASIC

ONE

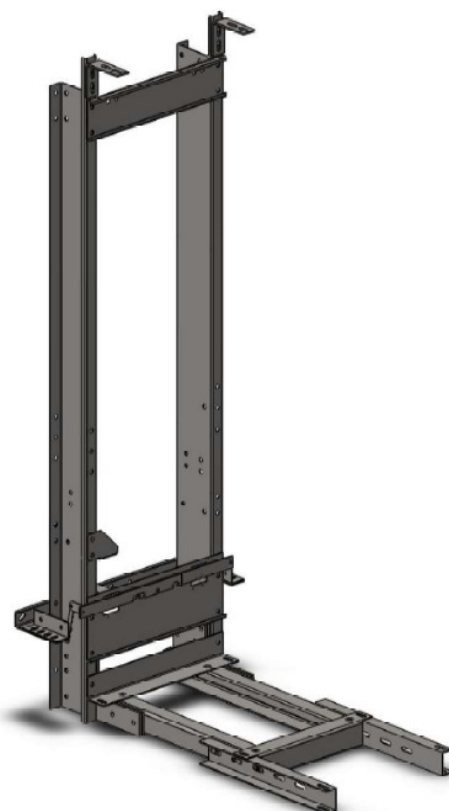
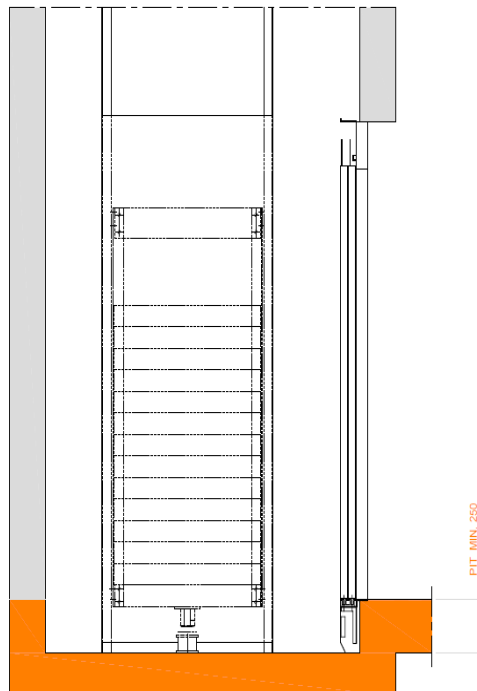
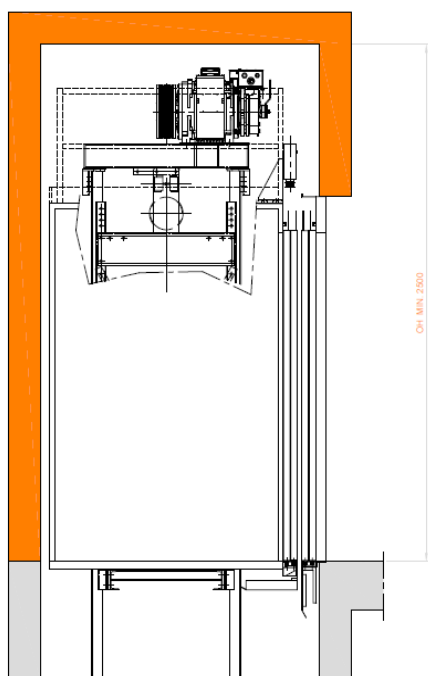
MRL ELECTRIC Lifts

Conforming to EN 81-20, EN 81-50, EN 81-70 and EN 81-21
Infinity of configurations.

For LOW PIT & OH issue try :

ONE
FIT

with **impulse**
Automatic safety device for reduced Pit & OH



* Case by case study for PIT & OH options, various configurations possible..

* Possible also with HYDRO Fit.

ONE

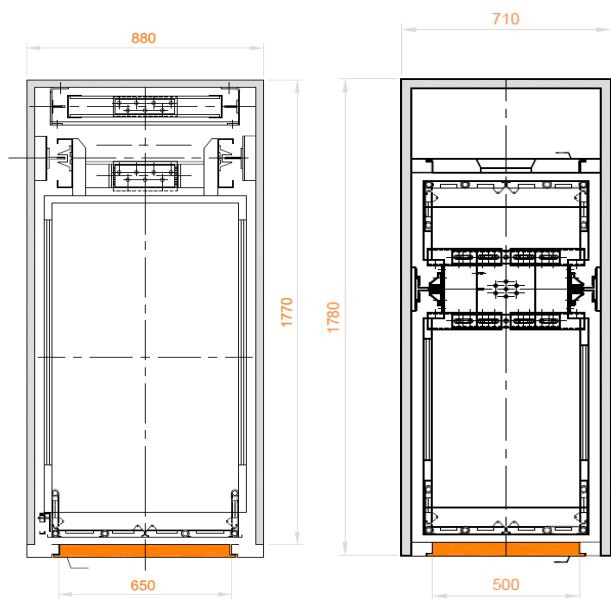
MRL ELECTRIC Lifts

Conforming to EN 81-20, EN 81-50, EN 81-70 and EN 81-21
Infinity of configurations.

For NARROW shafts issue try :

ONE

SLIM



* Some examples.

* Possible also with HYDRO Slim.

For BESPOKE applications try :

ONE

MEGA

Alimentary



Chemistry



Firefighter



ATEX



Naval



* Possible also with HYDRO Mega.

HYDRO

HYDRAULIC LIFTS

Conforming to EN 81-20, EN 81-50, EN 81.2

Private, Public, Commercial, Industrial use....



OVER

ELECTRIC LIFTS WITH MACHINE ROOM

Conforming to EN 81-20, EN 81-50

UP to 5000 kg

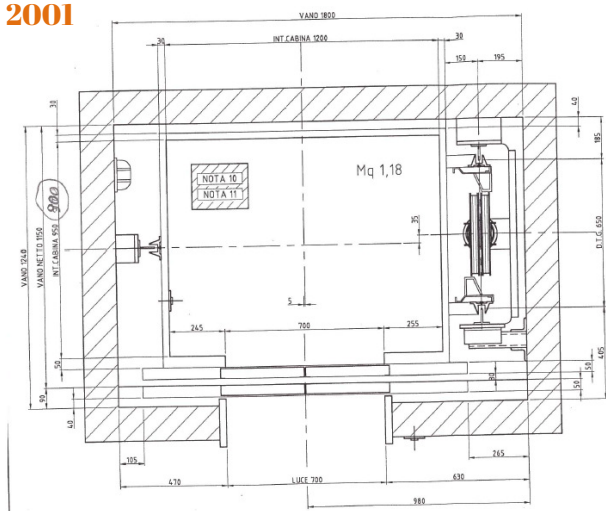


i-REPLACE

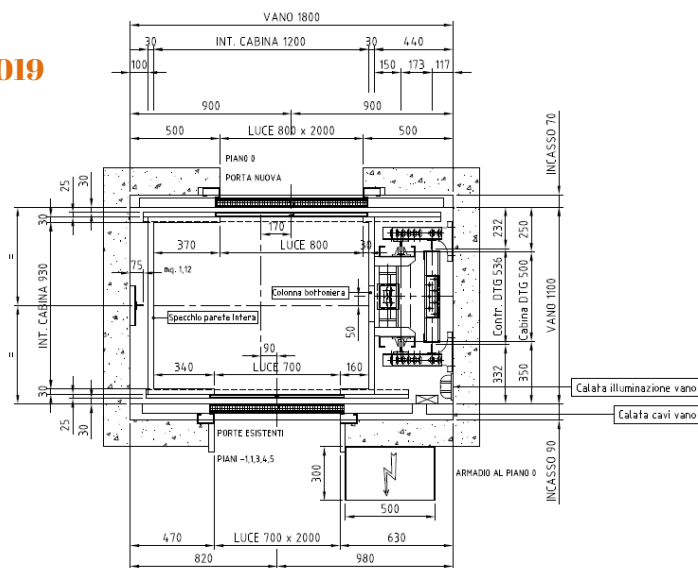
From Hydraulic to MRL.

example (Before and after)

2001



2019



i-RESTORE

New door system.

example (Before and after)

1989



2019



Modern Living



DESIGN OPTIONS :

We do Implement special:
Materials,
Shapes,
Finishes,
Designs,
Concepts,
Applications,



Cultural Heritage

THEY TRUST IN US :

**THINK
OUTSIDE
THE BOX**

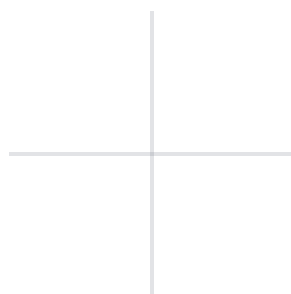
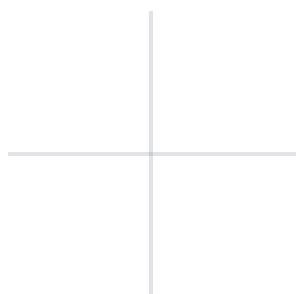
amazon

Allianz 


BARCLAYS



INTESA  SANPAOLO



BRICO
CENTER

 Dompé


MONCLER®

A photograph of a small, vibrant green seedling with several leaves growing out of the center of a weathered, grey-brown tree stump. The stump's surface is covered in a network of deep, irregular cracks, and its concentric growth rings are clearly visible. The seedling is positioned in the upper-middle part of the frame, symbolizing new growth and environmental care.

We care about our environment

By achieving remarkable advancement in energy-efficient elevator technology.



**Your comfort
and security are
our priorities.**

**Our lifts are adapted for people with reduced mobility and
equipped with Kids control security options.**

OMNIA LIFT, YOUR TECHNICAL PARTNER



Via C.Minoretti, 85/B-20815 Cogliate (MB) Italy

Tel: +39 (0) 296 469361 Fax: +39 (0) 296 469326

marketing@omnialift.it

